

SUSTAINABLE
DESIGN
PRODUCTION
USE



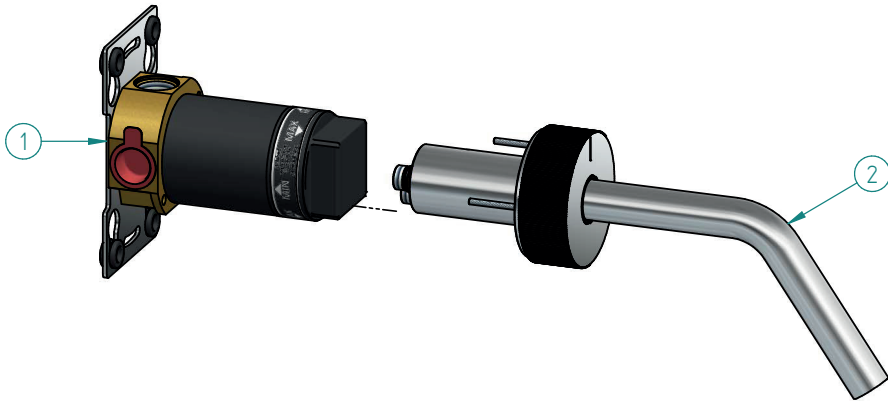
COLLECTION

REEL

DESIGNSTUDIOADOLINI

AMPHORA
WATER SOURCE

SUSTAINABLE DESIGN



- All Reel mixers outer parts are made of marine grade 316 stainless steel and inner parts of lead-free brass; state-of-the-art materials that allow for maximum product durability

ROLDAN, S.A. - Acciai Inossidabili

CERTIFICATO DISPOSIZIONE EN 10204 3.1

ROLDAN S.p.A. - Via S. Maria, 47 - 20138 Milano (MI) - Tel. 02 574911 - Fax 02 574912

ROLDAN S.p.A. - Via S. Maria, 47 - 20138 Milano (MI) - Tel. 02 574911 - Fax 02 574912

ROLDAN S.p.A. - Via S. Maria, 47 - 20138 Milano (MI) - Tel. 02 574911 - Fax 02 574912

CONDIZIONE	NUMERO DEL PRODOTTORE	NUMERO	FORMA DI RICEVERE	ESPRESSIONE DI QUALITÀ
EA8 + A08 + CC	RDN	R3		

CONDIZIONE	NUMERO DEL PRODOTTORE	NUMERO	FORMA DI RICEVERE	ESPRESSIONE DI QUALITÀ
EA8 + A08 + CC	RDN	R3		

ALMAG

ALMAG S.p.A. AZIENDA LABORAZIONI METALLURGICHE E ASTRONOMICHE

HUB

Attestato di controllo EN 10204 3-2
 Your report: EN 10204 3-2

Clienti / Destinazione: VEDICA METAL S.R.L. - VIA FRANZESCO BELLE D'OLLE 7 - 20154 MILANO (MI)

Doc. di spedizione (D.A.T.) / Shipping document: 24340 Data/Date: 07.09.2023

Doc. di spedizione / Shipping document: 24340 Data/Date: 07.09.2023

Doc. di spedizione / Shipping document: 24340 Data/Date: 07.09.2023

Doc. di spedizione / Shipping document: 24340 Data/Date: 07.09.2023

MATERIALE / MATERIAL

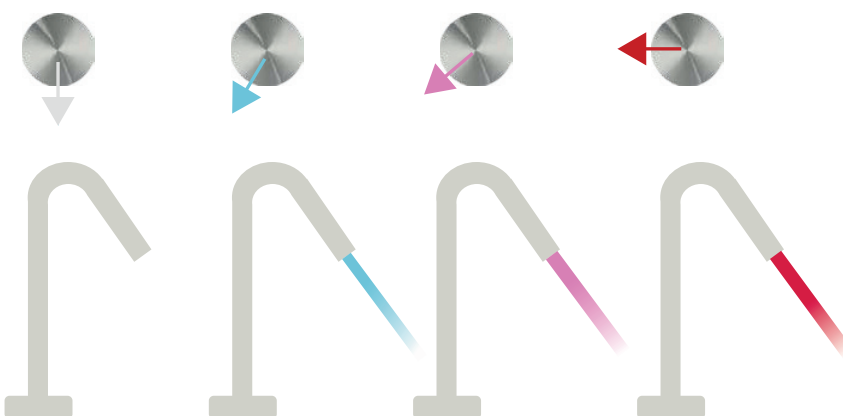
Prodotto / Product: Norma EN 10204 3-2, EN 10204 3-1, EN 10204 3-2

COMPOSIZIONE CHIMICA % / CHEMICAL COMPOSITION %

Elementi	Cl	Pb	Bi	Fe	Ni	Al	Altri	Sp
EN 10204 3-2	0,03	0,01	0,005	0,005	0,005	0,005	< 0,01	0,005
EN 10204 3-1	0,03	0,01	0,005	0,005	0,005	0,005	< 0,01	0,005
EN 10204 3-2	0,03	0,01	0,005	0,005	0,005	0,005	< 0,01	0,005

CARATTERISTICHE MECCANICHE / MECHANICAL PROPERTIES

EN 10204 3-2



- All Reel washbasin mixers are designed based on the energy-saving ColdStart motion to allow hot water supply only when the user wants it, thus preventing the instant heater from switching on when not necessary

SUSTAINABLE PRODUCTION

All Reel mixes are made using non-toxic materials, recycling all production scraps, achieving colour finishes only via zerowaste PVD coating: an **environmentally-friendly** and **resource-saving production process**

All Reel mixers are entirely manufactured in the Orta Lake district in Italy, by **certified manufacturers** fully committed to respect social and environmental standards and goals

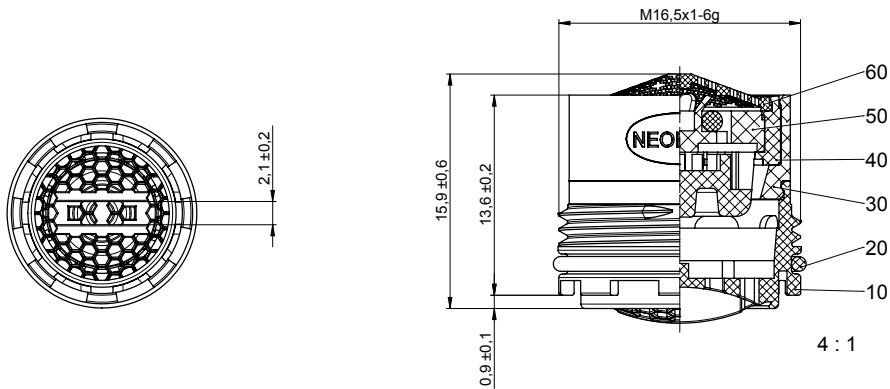


SUSTAINABLE USE



All Reel washbasin mixers are equipped with water saving restricted aerators, performing a maximum flow of 5,7 litres/minute

Part No.	Flow Rate	Colour Code flow regulator
44.3258.45000	1.0gpm max.	blue
44.3260.45000	1.2gpm max.	pink
44.3251.45000	5,0l/min	orange
44.3256.45000	1.5gpm max.	green
44.3261.45000	1.75gpm max.	light blue
44.3255.45000	7,0l/min	light green
44.3257.45000	2.0gpm max.	lilac
44.3253.45000	2.2gpm max.	yellow
44.3254.45000	8,0l/min	natural white



Qty.	Title	Pos.	Part-No.	Material
1	dome screen d12,5 transparent	60	53.1429.10000	PP-H
1	flow regulator MR05 PL-TT	50	see following sheets	POM / EPDM
1	diffuser TT	40	see following sheets	POM
1	diffuser ring TT	30	53.1111.10000	POM
1	o-ring 14,00x1,00	20	55.0136.10000	silicone
1	HC CS basket CACHÉ TT m M16,5x1	10	53.0723.10000	POM

NEOPERL GmbH D-79379 Müllheim		Change No.: 50000006523 Date: 07.05.2015 Drawn: T. Dahm	Approval of drawing change: Date: 31.03.2020 Approv.: H. Schürle	Rev. C
Date: 06.04.2011 Name: D. OECHSLE		Surface DIN EN ISO 1302		Part No.: 44.3251.45000 - 44.3261.45000
Approved: 06.04.2011 G. BLUM		General tolerances DIN ISO 2768-TH		Title: CACHÉ-HC-CS-TT-m M16,5x1-PCA
Scale: 3:1		work pieces DIN ISO 13715		Material: Material Description / Tradename: Colour:
Format: A3	Page 1 of 4			Replacement for: 45.2251.48000 - 45.2261.48000 (0) Orig.
Volume:	Weight:			

Amphora Srl
Via dello Statuario, 15 55045 Pietrasanta (LU) Italy
info@amphoradesign.it
amphoradesign.it